

Plate thk.8-780x373.5  
N.2 pieces

Rod  $\varnothing 150$  Lg. 150  
N.1 piece

Plate thk.8-373.5x300  
N2 pieces

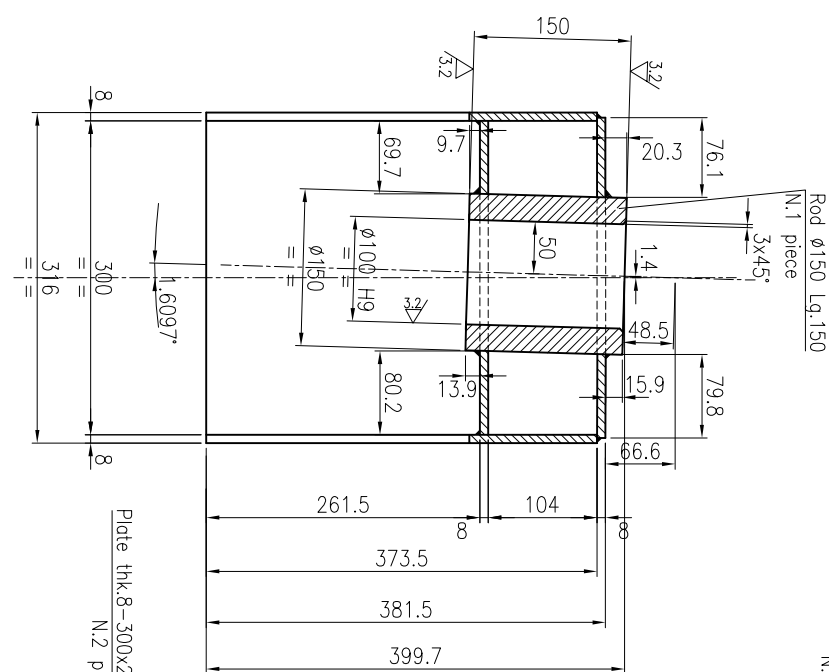
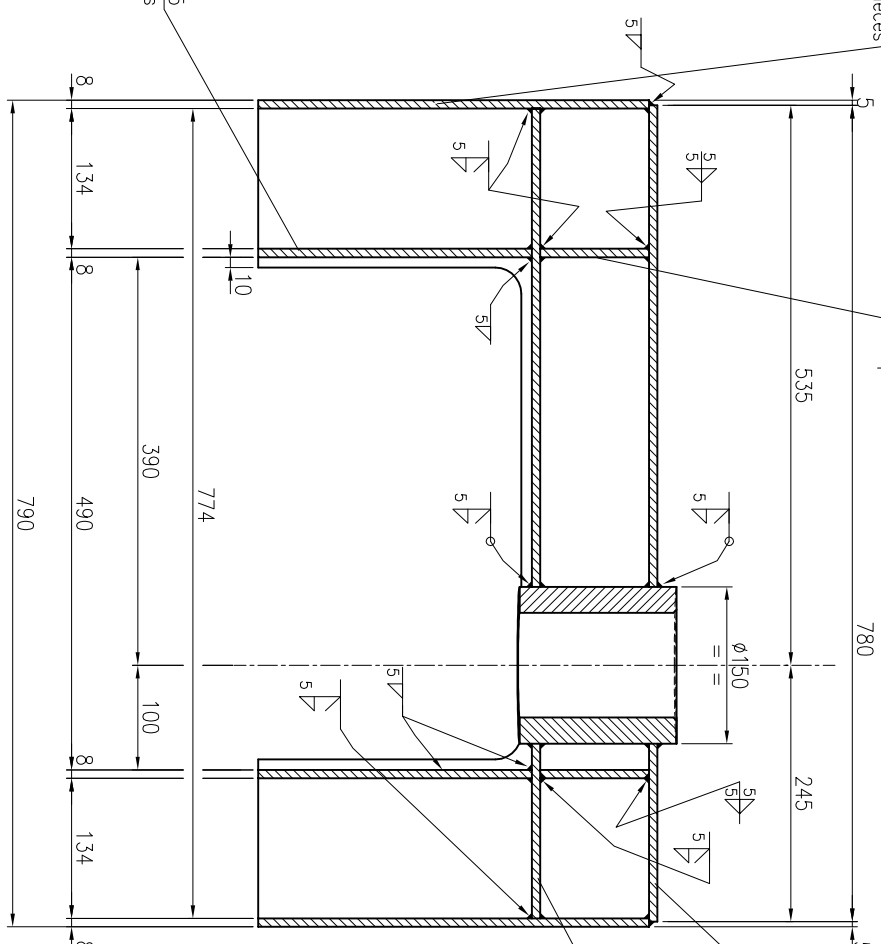


Plate thk.8-300x104  
N.2 pieces

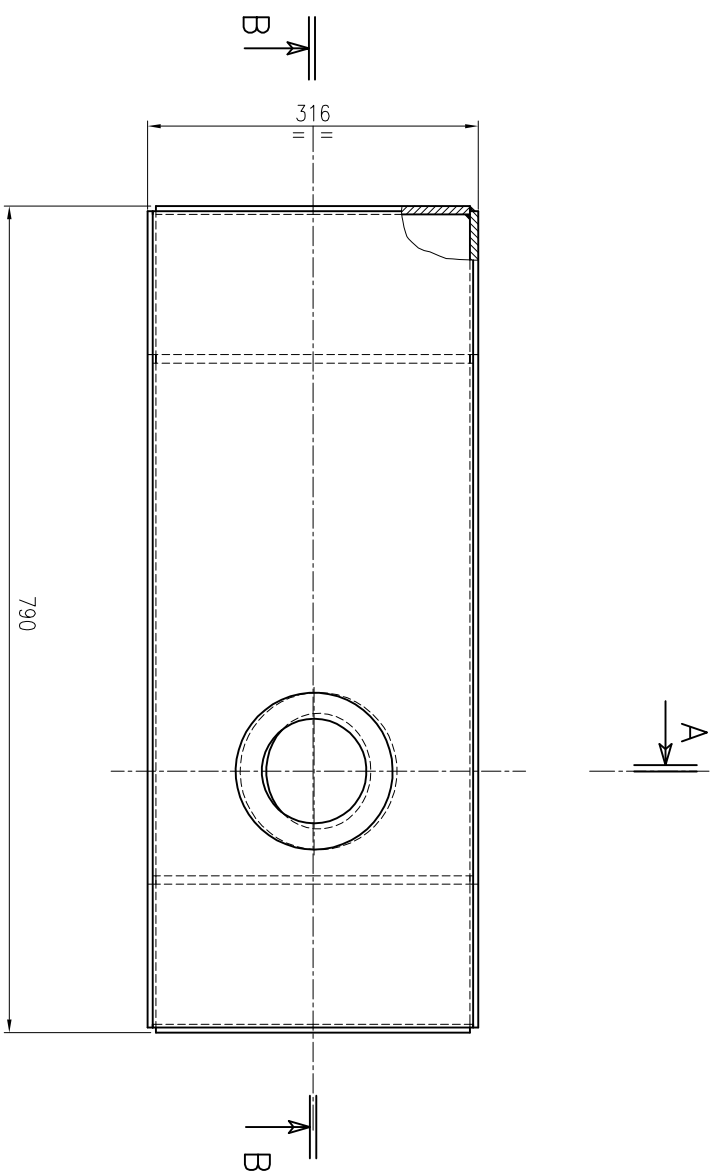
Plate thk.8-180x300  
N.1 piece

Plate thk.8-300x774  
N.1 piece



## SECT. A-A

SECT. B-B


$$\left( \frac{3.2}{25} \right)$$

FOR N.1 CRANE MANUFACTURE N.1 PIECE AS DRAWING AND N.1 PIECE SYMMETRICAL

[illegible]